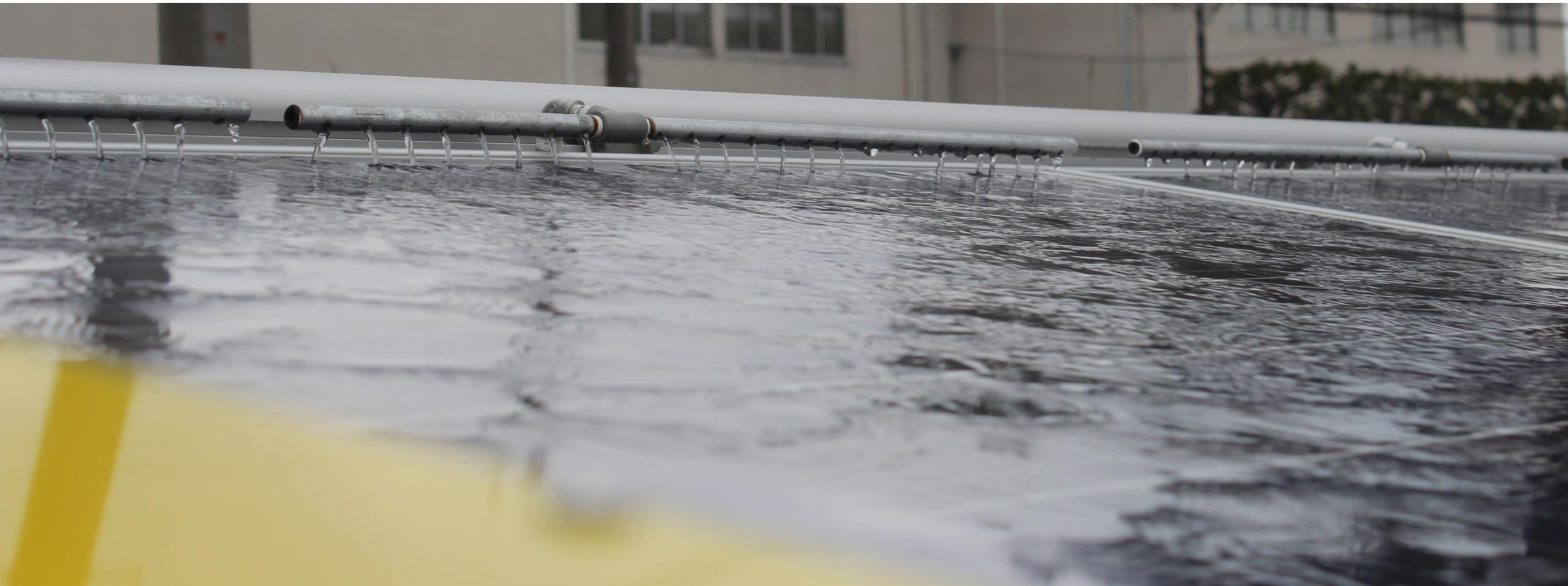


**For winter snow & summer heat !**

# SUN-SUI 51

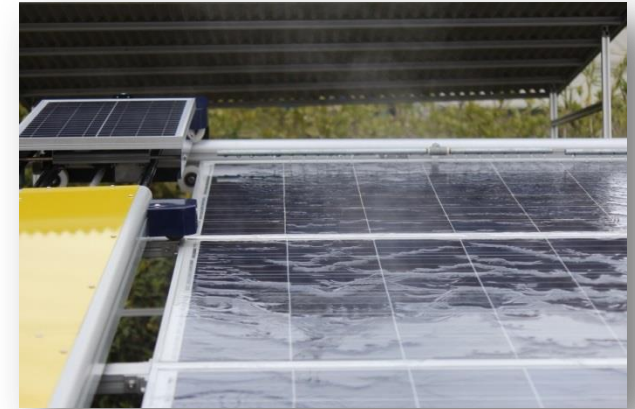
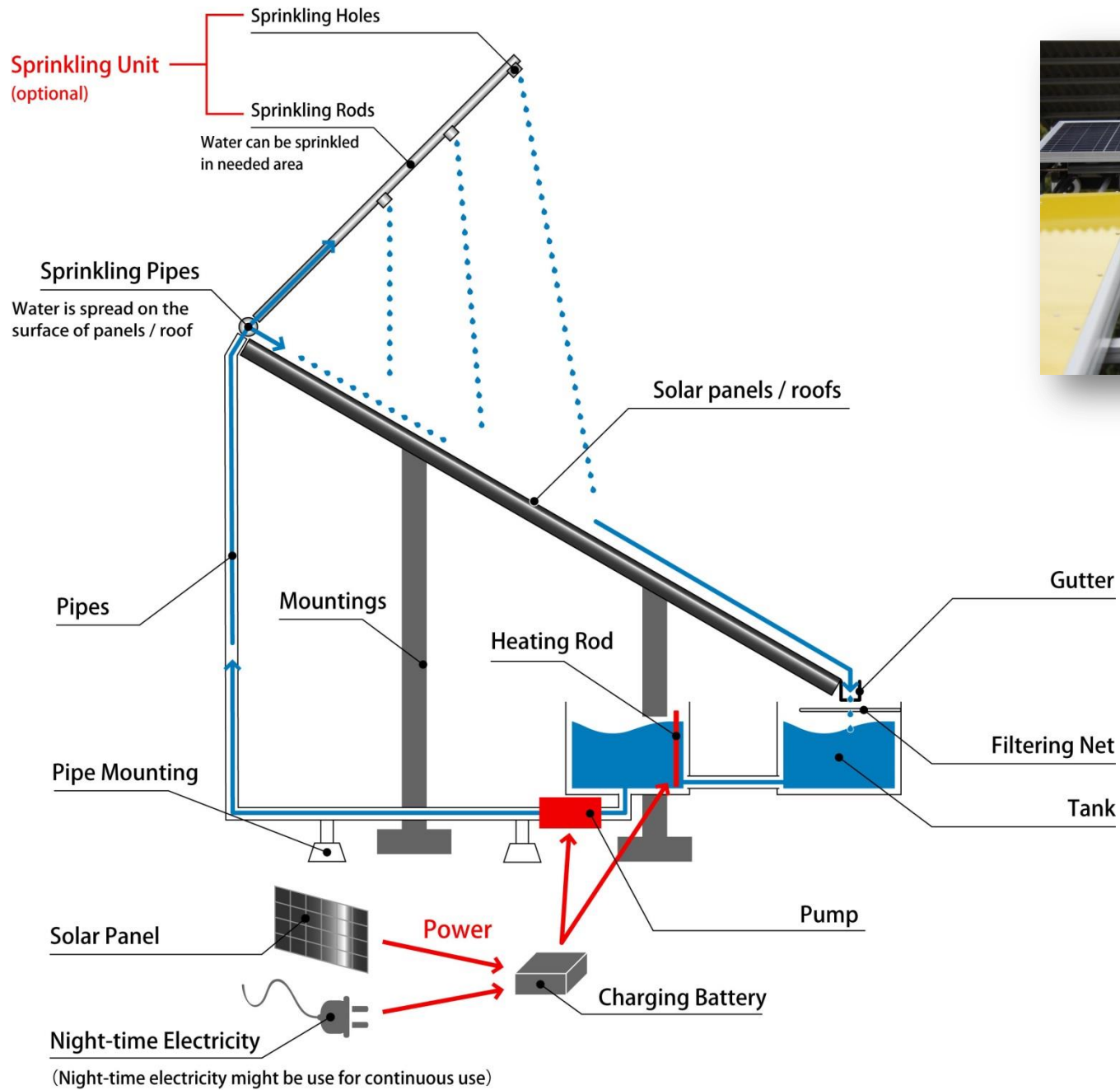
Auto Sprinkling System with Rain Water

PAT No. 20016-89851



June, 2016

# SUN-SUI 51 Figure



# SUN-SUI 51 Summery

1. All rainwater is collected in the special gutter from the panels or the roofs.
2. The water is collected in a tank placed nearby.
3. In winter, the water is heated to melt the snow.
4. The collected water is sent to the pipes above the panels or roofs, by way of a pump, to be spread or sprinkled on panels or roofs.
  - ★A solar panel is attached to the system to generates power for intermittent use.
  - ★The night-time electricity is stored in case of continuous use, (i.e, to avoid accumulation of snow).

<b>Pipes</b>	Pipes from the tank to the sprinkling holes.
<b>Sprinkling pipes</b>	The amount of water can be adjusted according to the needs.
<b>Gutter</b>	A special gutter is used to collect a great amount of water.
<b>Tank</b>	The number and size of the tanks will differ according to the size of panels or roofs.
<b>Heating rod</b>	It can heat the water in the tank up to 50°C and keep the water warm.
<b>Pump</b>	It can send the water to the sprinkling holes.
<b>Battery</b>	Power from solar panel or the night-time electricity is charged in the battery.
<b>Solar panel</b>	The system uses its own electricity, the one generated from the solar panel.
<b>Sprinkling unit</b>	To sprinkle water in areas other than panels or roofs, a sprinkling unit can be attached. (optional)

# SUN-SUI 51 Characteristics

- 1) A special gutter is used in order to obtain better efficiency for water collection and all gaps between the solar panels are sealed.
  - ★The necessary amount of water is collected (unless in extreme circumstances).
- 2) The tanks for collected water have been carefully designed.
  - ★When more than two tanks are used, and the first tank gets full, water will be sent automatically to the next tank.
  - ★The number or the size of the tanks will differ according to the length of array/ or the size of roof.
- 3) In case of snowy weather, water in the tank is heated.
  - ★Power from the solar panel, or the night-time electricity is used to heat the water.
- 4) The best way to prevent the accumulation of snow, is to run hot water for 24 hours.
  - ★Running hot water for 24 hours prevents the pipes to freeze and the snow to accumulate.
  - ★The use of SUN-SUI 51 prevents snow or dirt to accumulate.
- 5) Thanks to well designed sprinkling holes, all kind of surface can be covered with water.
- 6) SUN-SUI 51 can be used from huge solar plants to domestic houses.
  - ★It can be installed on roofs for winter snow.
- 7) SUN-SUI 51 is a simple and eco-friendly system.
- 8) SUN-SUI 51 can also be used to cool down the summer heat.
  - ★Water is spread or sprinkle to cool roofs and facilities.



Rebirth N51

#108 Sebon Roppongi, 3-5-4 Roppongi, Minato-ku, Tokyo 106-0032 TEL : 03-6426-5812 FAX : 03-6426-5813

E-MAIL: [info@rebirthn51.com](mailto:info@rebirthn51.com) HP : <http://n51.com>